



120VAC 10A Wi-Fi Smart Plug

Works with Alexa and Google Home SKU: **BRM00805**

Welcome to The Braumm Family!

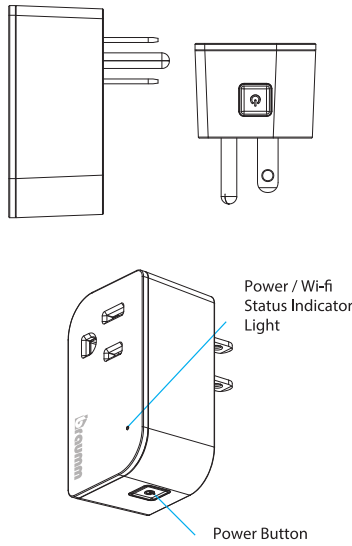
Package Includes

- 1x Braumm Wi-Fi Smart Plug
- 1x User Manual

Specification

SKU / Model	BRM00805US / P12
Power Supply	AC 90 – 135V, 60Hz
Nominal Input Voltage	AC 120V
Standby Power Loss	1W
Rated Current	10A Max
Wireless Frequency	2.412 GHz – 2.484 GHz
Network Protocol	IEEE802.11 b/g/n
Encryption Type	WEP/TKIP/AES, WPS
Working Temperature	14°F to 104°F / -10°C to 40°C
Storage Temperature	-4°F to 140°F / -20°C to 60°C
Relative Humidity	8% - 80% RH

Product Diagram



Button

- Short press the button to manually on/off control the device. The blue LED indicator will light on/off when plug is on/off.

APP Download

- Scan the QR code below to download APP for iOS or Android system. Or you can download the "Braumm" App on Apple store or Google Play.

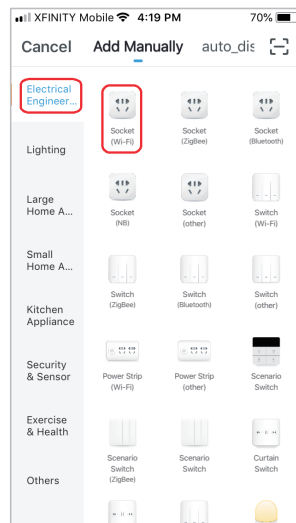
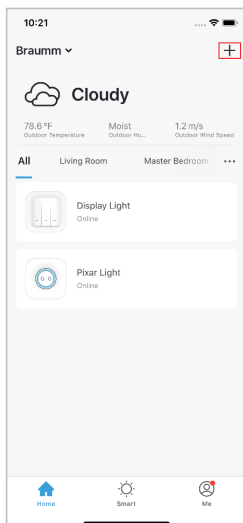


- Start the APP and register an account with your email address/mobile number, and then log in APP with the registered account.

Setup Guide

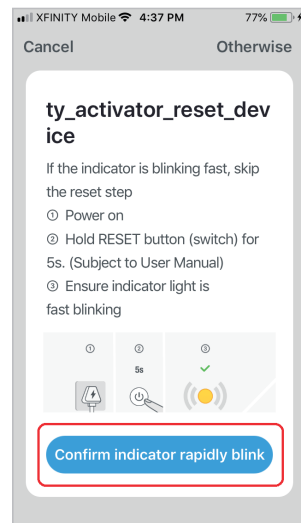
Easy Setup

- Click (+), and select the device type [Electrical Engineering], and then tap on [Socket(Wi-Fi)].

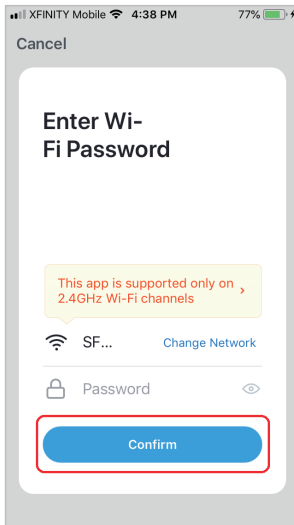


- Press and hold the button for at least 5 seconds until the LED indicator rapidly blinks

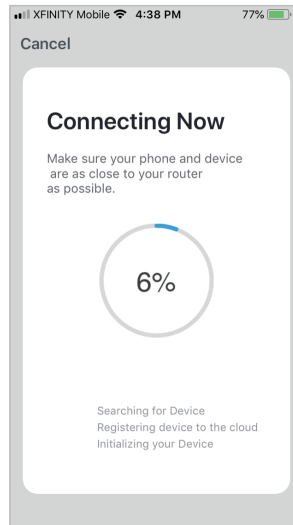
- Tap on [Confirm indicator rapidly blink].



- Input the password of the designated Wi-Fi network to include the device to Cloud.

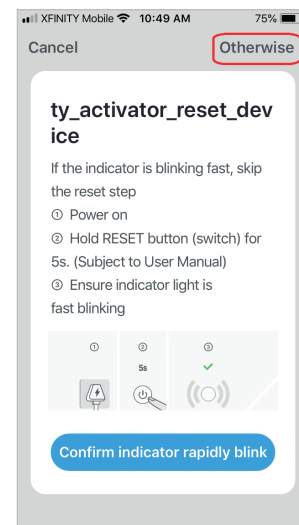


- Waiting for around 30 seconds before the device's inclusion process is complete.

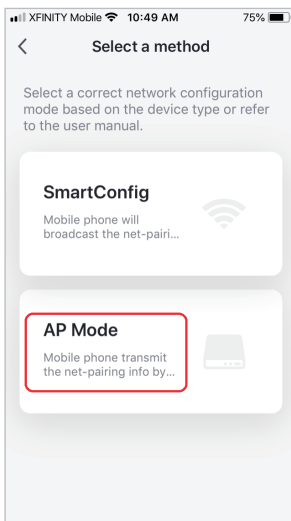


Alternative Pairing (AP) Mode

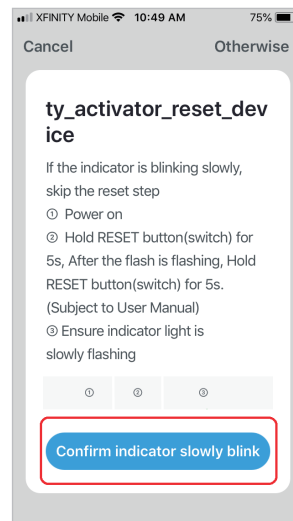
- Click [+], and select the device type [Electrical Engineering], and then tap on [Socket (Wi-Fi)].
- Tap on [Otherwise].



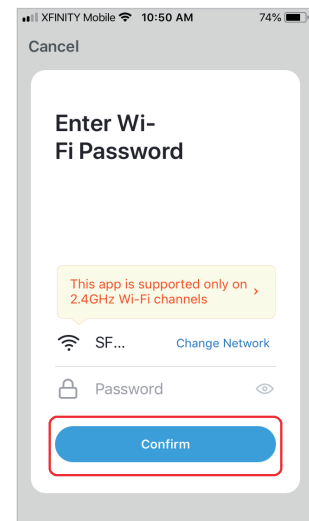
- Choose [AP Mode]



- Press and hold the button for at least 5 seconds until the LED indicator rapidly blinks, and then release the button.
- While the LED is rapidly blinking, press and hold the button for about 15 seconds until the LED slowly blinks.
- Tap on [Confirm indicator slowly blink].



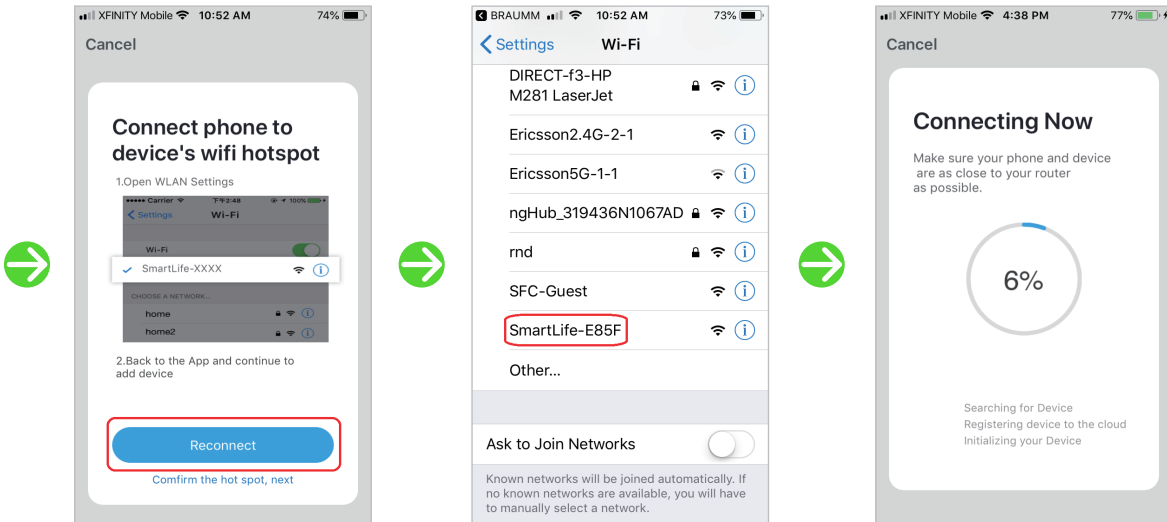
- Select the Wi-Fi network your mobile is connected to and enter the Wi-Fi password.



- Select the device AP name in Wi-Fi list "SmartLife-xxx" to finish the Wi-Fi connection.
- Go back to the Braumm App.

- APP will jump to "connection successful" page when the Wi-Fi connection process is complete.

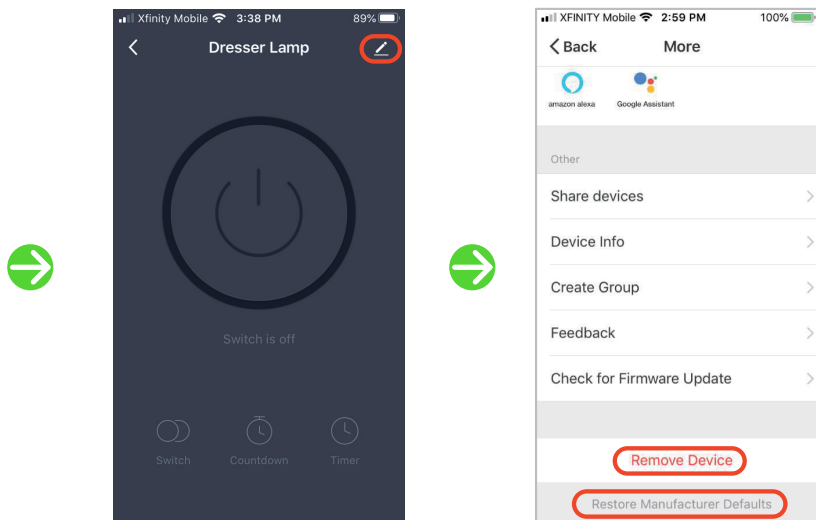
- Users can re-name or share the device after Wi-Fi connection is finished.



4. Delete devices

- Click [].

- Click [Remove Device] to remove this device from APP; or click [Restore Manufacturer Defaults] to remove the device from APP, and restore the device to factory settings.



Control Smart Devices with Amazon Alexa or Google Home

To Use with Amazon Alexa

a) Before you begin:

- Complete setup for your smart device using the Braumm app.
- Connect the smart device to the same Wi-Fi network as your Alexa device(s).

b) Discovering the smart device with a skill

- Open the Alexa App. Go to the menu, and then select [Skills and Games].
- Find the Braumm Control skill for your device, and then select "Enable". Follow the on-screen instructions to complete the linking process.
- Ask Alexa to discover your device. Say, "Discover my devices", or select [Add Device] in the [Devices] section of the Alexa App.

To Use with Google Home

a) Before you begin:

- Complete setup for your Smart Device using the Braumm app.
- Connect the Smart Device to the same Wi-Fi network as your Google Home device.

b) Connect the Smart Device to your Google Home device

- Open the Google Home App.
- At the top left, tap [+].
- Tap [Set Up Device].
- Tap [Have something already set up?].
- Select [Braumm Control] App.
- Follow the steps to complete setup.

Limited Lifetime Warranty

This Braumm product includes a limited lifetime warranty. Please visit our Braumm website for more details.

Recycling the Product

To dispose this product properly, please follow the recycling process regulated in your area.

FCC Information

This device complies with Part 15 of the FCC Rules. Operation is subject to the following two conditions: (1) this device may not cause harmful interference, and (2) this device must accept any interference received, including interference that may cause undesired operation.

Braumm inc is not responsible for any radio or tv interference caused by unauthorized modifications or change to this equipment. Such modifications or change could void the user's authority to operate the equipment.

This equipment has been tested and found to comply with the limits for a Class B digital device, pursuant to part 15 of the FCC Rules. These limits are designed to provide reasonable protection against harmful interference in a residential installation. This equipment generates, uses and can radiate radio frequency energy and, if not installed and used in accordance with the instructions, may cause harmful interference to

radio communications. However, there is no guarantee that interference will not occur in a particular installation. If this equipment does cause harmful interference to radio or television reception, which can be determined by turning the equipment off and on, the user is encouraged to try to correct the interference by one or more of the following measures:

- Reorient or relocate the receiving antenna.
- Increase the separation between the equipment and receiver.
- Connect the equipment into an outlet on a circuit different from that to which the receiver is connected.
- Consult the dealer or an experienced radio/TV technician for help.

RF warning statement:

To maintain compliance with FCC's RF exposure guidelines, this equipment should be installed and operated with a minimum distance of 20cm between the radiator and your body.

Follow Us on Social Media



www.braumm.com
support@braumm.com
© 2020 Braumm Inc. All rights reserved.



For installation videos, please visit bit.ly/braumm-how-to or scan the QR code below:



Contact us

Toll Free : (833) 888-BRAUMM

Direct : (878)-888-2728

Email : support@braumm.com