



125VAC/15A Outdoor Wi-Fi Smart US 1-Outlet

Works with Alexa and Google Home SKU: BRM00804

Welcome to The Braumm Family!

Thank you for purchasing this Braumm product. For optimum performance and safety, please read this user manual carefully before operating and keep it for future reference.

The Braumm Outdoor Wi-Fi Smart US 1-Outlet is a wi-fi enabled smart device enabling you to turn your outdoor electric appliances and equipment on or off using the Braumm app. When paired with the Braumm app, you will be able to set scenes, create schedules, start timers, and remotely control the power of the appliance or equipment you have connected to the outlet. The Outdoor Wi-Fi Outlet is also Alexa and Google Home enabled.

Disclaimer Statement

We are not liable for any damage or destruction to personal properties that are contained inside or outside the Braumm product.

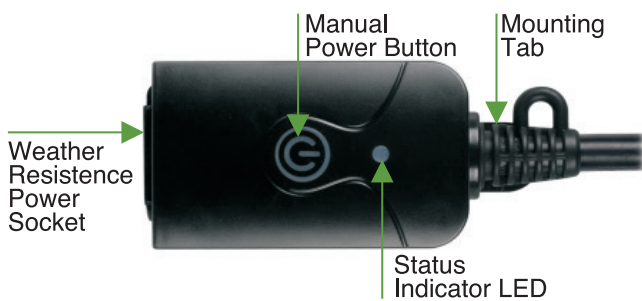
Package Includes

- 1x Braumm Wi-Fi Outdoor Wi-Fi Outlet
- 1x User Manual

Specifications

SKU / Model	BRM00804US
Power supply	AC 125V, 60Hz
Input voltage	AC 120V
Rated Current - Resistive	15A Max
Rated Wattage - Resistive	1875W
Rated Current - Tungsten	8A
Rated Wattage - Tungsten	1000W
Wireless frequency	2.4GHz
Network Protocol	IEEE802.11 b/g/n

Product Diagram



Operations

1. Button and LED indicator

- Press and hold the button for 5 seconds to put the outlet into connection mode.
- Pressing the button while the device is plugged in will turn it on and off manually. The outlet is OFF when the indicator LED is blue. A purple indicator LED means the outlet is ON.

2. APP download and account binding

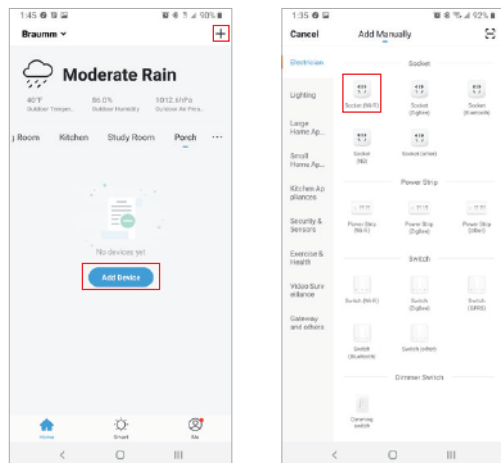
- Scan the QR code below to download the Braumm app for iOS or Android. Or you can download the "Braumm" App on Apple store or Google Play.



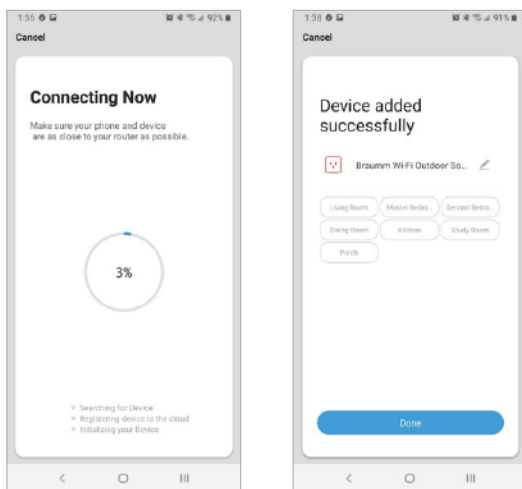
- Start the APP and register an account with your email address/mobile number, and then log in APP with the registered account.

3. Add device

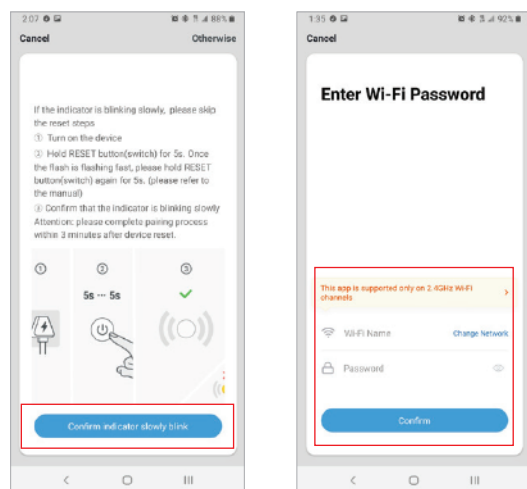
Tap “**Add Device**” or the “+” symbol in the top right corner of the screen to add devices. Select “Socket (Wi-Fi)” to add your Braumm Wi-Fi Outdoor Smart Outlet.



2. Wait about 30 seconds for the discovery and pairing process to complete. If the device was added successfully, you should see the “Device added successfully” screen. Press **Done** to complete.

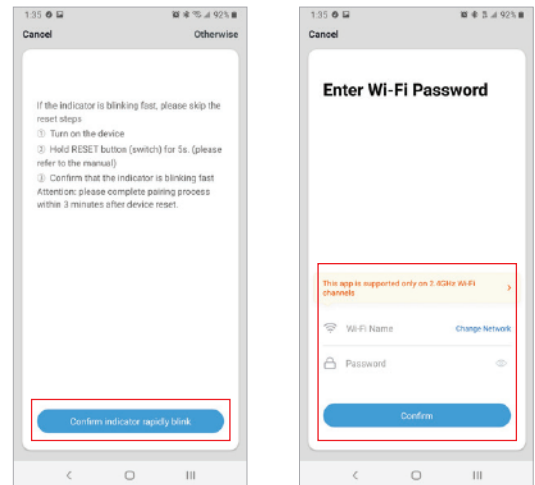


2. Tap “**Confirm indicator slowly blink**” to continue AP mode pairing.
3. Enter your Wi-Fi password in the given box and tap “**Confirm**”.
The Wi-Fi name should be automatically filled out.



• EZ mode

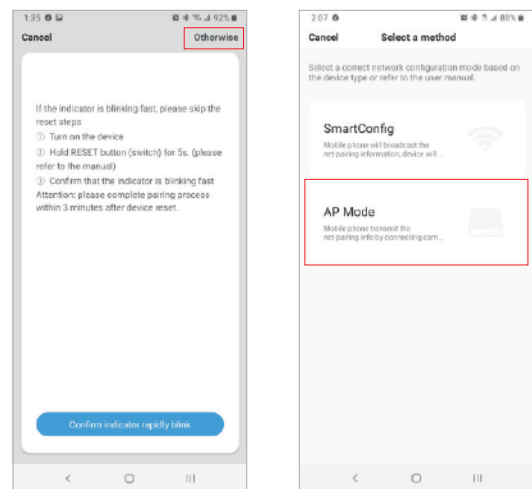
1. The plug will blink fast in blue when powered on in EZ mode. Tap “**Confirm Indicator rapidly blink**” button. Input the password of your 2.4GHz Wi-Fi network. Please note the device is not compatible with 5GHz wireless networks.



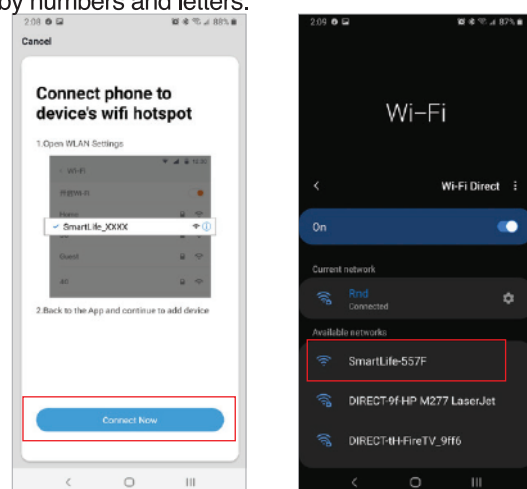
• AP mode

The plug will blink fast blue when powered on. Hold the button for 5 seconds then release to enable AP mode, which will have a slowly blinking indicator LED.

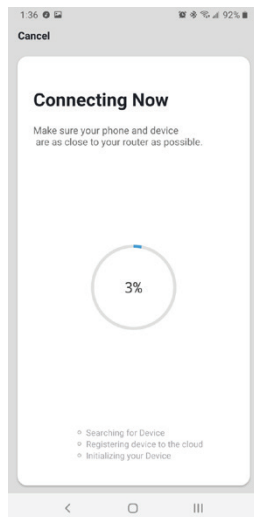
1. Tap “**Otherwise**” in the upper right hand corner then tap AP mode to start AP mode pairing.



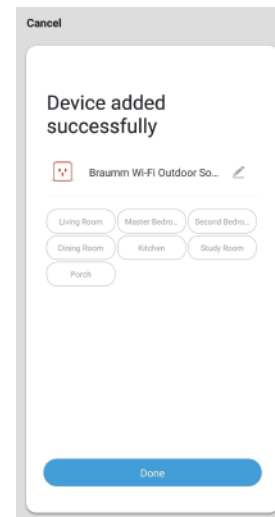
4. Tap “**Connect Now**” to advance to the next screen.
5. Select the AP name in your phones Wi-Fi list. The name of the AP will be “SmartLife-XXXX”, with the Xs being replaced by numbers and letters.



6. You will be returned to the “Connecting Now” screen.
Wait 30 seconds for the device to finish discovery and pairing.



7. When the device is added successfully, you will see the “Device added successfully” screen. You will also be able to rename the device on this screen. If you do not wish to rename the device, tap “Done” to finish pairing.



4. Delete devices

Click “...”, and then click “Remove Device” to remove this device from the app; click “Restore Manufacturer Defaults” to remove the device from the app and restore it to default settings.

5. Using Amazon Alexa to control smart devices

- 1) Before you begin:
 - Complete setup for your Outdoor Wi-Fi Outlet using the Braumm app.
 - Connect the Outdoor Wi-Fi Outlet to the same Wi-Fi network as your Echo devices.
- 2) Discovering Outdoor Wi-Fi Outlet with a skill
 - Open the Alexa app. Go to the menu, and then select “Skills”.
 - Find Braumm for your device, and then select “Enable”. Follow the on-screen instructions to complete the linking process.
 - Ask Alexa to discover your device. Say, “Discover my devices”, or select “Add Device” in the “Smart Home” tab of the Alexa app.

6. Using Google Home to control your Outdoor Wi-Fi Outlet.

- 1) Before you begin:
 - Complete setup for your Outdoor Wi-Fi Outlet using the

Braumm app.

- Connect the Outdoor Wi-Fi Outlet to the same Wi-Fi network as your Google Home device.
- 2) Discovering Outdoor to your Google Home device
 - Open the Google Home app.
 - On the Home tab, tap the "Add" quick action.
 - Tap "Set up device".
 - Tap "Have something already set up?".
 - Select "Braumm" app.
 - Follow the steps to complete setup.

Safety Precautions

- This product is intended for both indoor and outdoor use.
- When installed outdoors please make sure the outlet is facing down and no less than 2 feet(0.6 meter) off the ground to prevent the outlet laying in collected pools of water.
Only compatible with 2.4GHz Wi-Fi networks. **NOT compatible with 5GHz.**
- Ensure your home Wi-Fi network uses only letters and numbers in the SSID and password. Special characters are not recognized by this device and may prevent your network from being detected.
- Do not overload this device. Maximum load is 1875W, 15A on

FCC Information

This device complies with Part 15 of the FCC Rules. Operation is subject to the following two conditions: (1) this device may not cause harmful interference, and (2) this device must accept any interference received, including interference that may cause undesired operation.

The manufacturer is not responsible for any radio or tv interference caused by unauthorized modifications or change to this equipment. Such modifications or change could void the user's authority to operate the equipment.

This equipment has been tested and found to comply with the limits for a Class B digital device, pursuant to part 15 of the FCC Rules. These limits are designed to provide reasonable protection against harmful interference in a residential installation. This equipment generates, uses and can radiate radio frequency energy and, if not installed and used in accordance with the instructions, may cause harmful interference to radio communications. However, there is no guarantee that interference will not occur in a particular installation. If this equipment does cause harmful interference to radio or television reception, which can be determined by turning the equipment off and on, the user is encouraged to try to correct the interference by one or more of the following measures:

- Reorient or relocate the receiving antenna.
- Increase the separation between the equipment and receiver.
- Connect the equipment into an outlet on a circuit different from that to which the receiver is connected.
- Consult the dealer or an experienced radio/TV technician for help.

Limited Lifetime Warranty

This Braumm product includes a limited lifetime warranty. Please visit our Braumm website for more details.

Recycling the Product

To dispose this product properly, please follow the recycling process regulated in your area.

RF warning statement

To maintain compliance with FCC's RF exposure guidelines, this equipment should be installed and operated with a minimum distance of 20cm between the radiator and your body a resistive circuit or 1000W 8A on a tungsten circuit.



For installation videos, please visit bit.ly/braumm-how-to or scan the QR code below:



Contact us

Toll Free : (833) 888-BRAUMM

Direct : (878)-888-2728

Email : support@braumm.com