



120VAC 10A Wi-Fi Smart Plug

User Manual

Thank you for purchasing this Braumm product. For optimum performance and safety, please read this user manual carefully before operating and keep it for future reference.

Braumm Smart Plug is a Wi-Fi switch which can be used to remotely on/off control the plugged device after paired to the Wi-Fi network. By using the Braumm app, you are able to switch the appliance, set timer and schedules, create scenes, and share the device with your family. The Smart Plug also works with Alexa and Google Home for voice control.

Disclaimer Statement

We are not liable for any damage or destruction to personal properties that are contained inside or outside the Braumm product.

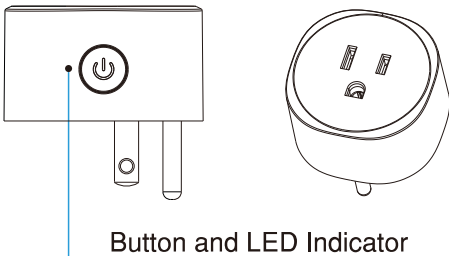
Package Includes

- 1x Braumm Wi-Fi Smart Plug
- 1x User Manual

Specification

SKU / Model	BRM00802 / P11
Power supply	AC 90 – 135V, 60Hz
Nominal input voltage	AC 120V
Standby power loss	1W
Rated current	10A max
Wireless frequency	2.412 GHz – 2.484 GHz
Network Protocol	IEEE802.11 b/g/n
Encryption type	WEP/TKIP/AES, WPS
Working temperature	14°F to 104°F / -10°C to 40°C
Storage temperature	-4°F to 140°F / -20°C to 60°C
Relative humidity	8% - 80% RH

Product Diagram



Operations

1. Button activities and LED indicator

- Press and hold the button for 5 seconds to enter into Wi-Fi connection (or configuration). The LED indicator will blink rapidly (EZ mode) or slowly (AP mode). EZ mode connection was set as default in Wi-Fi configuration.
 - Press and hold the button for 5 seconds will enable the device switch between EZ mode and AP mode.
- Short press the button to manually on/off control the device. The blue LED indicator will light on/off when plug is on/off.

2. APP download and account binding

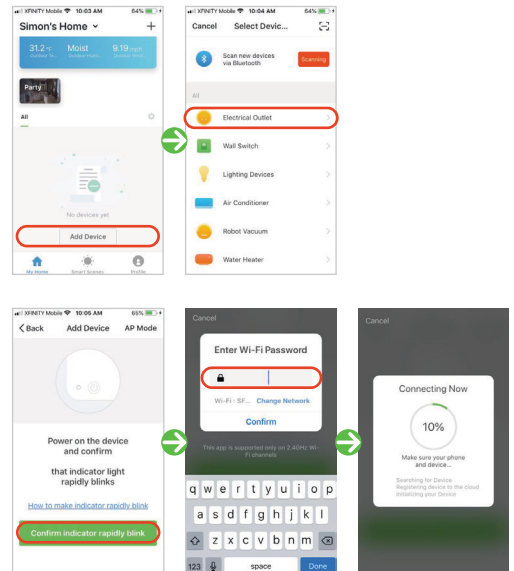
- Scan the QR code below to download APP for iOS or Android system. Or you can download the “Braumm” App on Apple store or Google Play.



- Start the APP and register an account with your email address/mobile number, and then log in APP with the registered account.

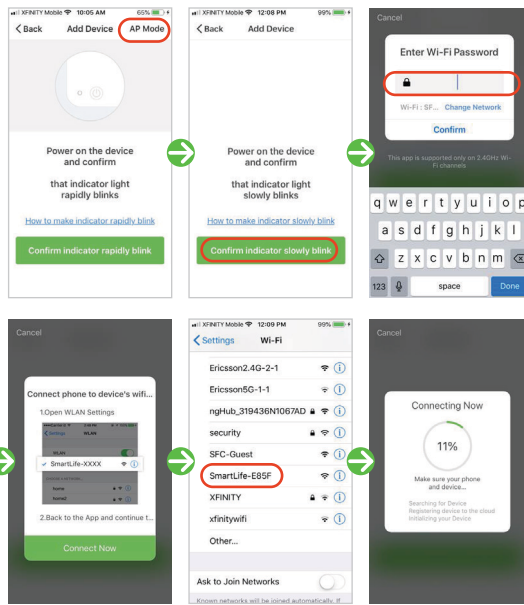
3. Add device

- Click “ADD Devices” and select the Device Type “Electrical Outlet”
- EZ mode
 - Plug will blink fast in blue when powered on in EZ Mode.
 - Input the password of the designated Wi-Fi network to include the device to Cloud.
 - Waiting for around 30 seconds before the devices inclusion process is complete.



AP mode

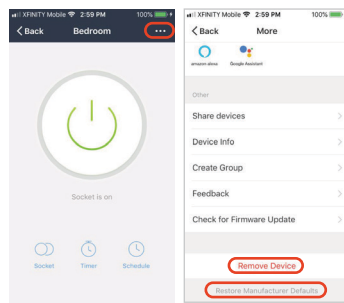
- Plug will blink fast in blue when powered on. Press and hold the button for 5 seconds and then release.
- The LED indicator will blink slowly in blue.
- Choose AP mode, select the Wi-Fi network your mobile is connected to and enter the Wi-Fi password.
- Select the device AP name in Wi-Fi list "SmartLife-xxxx" to finish the Wi-Fi connection.
- APP will jump to "connection successful" page when the Wi-Fi connection process is complete.



- Users can re-name or share the device after Wi-Fi connection is finished. Make sure the device is working in EZ/AP mode, if the APP works in EZ/AP mode.

4. Delete devices

- Click "...", and then click "Remove Device" to remove this device from APP; click "Restore Manufacturer Defaults" to remove the device from APP.



Using Amazon Alexa

Using Amazon Alexa to control smart devices.

1. Before you begin

- Complete setup for your Smart Plug using the Braumm app.
- Connect the Smart Plug to the same Wi-Fi network as your Echo devices.

2. Discovering Smart Plug with a skill

- Open the Alexa app. Go to the menu, and then select "Skills".
- Find Braumm for your device, and then select "Enable". Follow the on-screen instructions to complete the linking process.
- Ask Alexa to discover your device. Say, "Discover my devices", or select "Add Device" in the "Smart Home" tab of the Alexa app.

Using Google Home

Using Google Home to control your Smart Plug.

1. Before you begin

- Complete setup for your Smart Plug using the Braumm app.
- Connect the Smart Plug to the same Wi-Fi network as your Google Home device.

2. Connect Smart Plug to your Google Home device

- Open the Google Home app.
- On the Home tab, tap the "Add" quick action. Tap "Set up device".
- Tap "Have something already set up?".
- Select "Braumm" app.
- Follow the steps to complete setup.

Follow Us On Social Media



www.braumm.com

support@braumm.com

© 2018 Braumm Inc. All rights reserved.

Safety Precautions

- This product is intended for indoor use only in dry locations.
- Only for 2.4G Wi-Fi router, not suitable for 5G Wi-Fi router
- Please set your home Wi-Fi account name and passwords by numeric and letters, no use of special symbols.
- Please ensure the security of electricity: Max. current load cannot be higher than 10A; Max. power load cannot be higher than 1200W.
- The LED indicator will blink in blue and shut off in 10 seconds when current load is higher than 11.5A in 120V rated working voltage.

Limited Lifetime Warranty

This Braumm product includes a limited lifetime warranty. Please visit our Braumm website for more details.

Recycling the Product

To dispose this product properly, please follow the recycling process regulated in your area.

FCC Information

This device complies with Part 15 of the FCC Rules. Operation is subject to the following two conditions: (1) this device may not cause harmful interference, and (2) this device must accept any interference received, including interference that may cause undesired operation.

The manufacturer is not responsible for any radio or tv interference caused by unauthorized modifications or change to this equipment. Such modifications or change could void the user's authority to operate the equipment.

This equipment has been tested and found to comply with the limits for a Class B digital device, pursuant to part 15 of the FCC Rules. These limits are designed to provide reasonable protection against harmful interference in a residential installation. This equipment generates, uses and can radiate radio frequency energy and, if not installed and used in accordance with the instructions, may cause harmful interference to radio communications. However, there is no guarantee that interference will not occur in a particular installation. If this equipment does cause harmful interference to radio or television reception, which can be determined by turning the equipment off and on, the user is encouraged to try to correct the interference by one or more of the following measures:

- Reorient or relocate the receiving antenna.
- Increase the separation between the equipment and receiver.
- Connect the equipment into an outlet on a circuit different from that to which the receiver is connected. -- Consult the dealer or an experienced radio/TV technician for help.

RF warning statement:

To maintain compliance with FCC's RF exposure guidelines, this equipment should be installed and operated with a minimum distance of 20cm between the radiator and your body.



DO NOT RETURN THE PRODUCT

There are good days and there are bad days. It is our SAD if the product is not working, or if you are not happy with it.

PLEASE GIVE US A CHANCE and WE WILL MAKE IT RIGHT



Contact us:
Toll Free: (833) 888-BRAUMM (+1-833-888-2728)
Direct: (878) 888-BRAUMM (+1-878-888-2728)
Email: support@braumm.com